

6

5

4

3

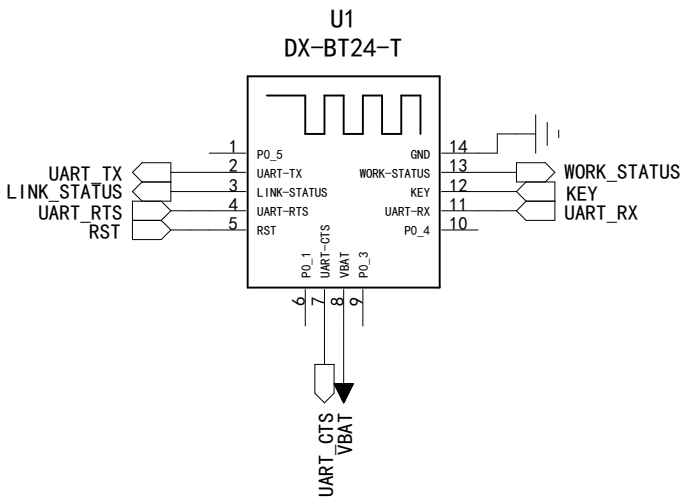
2

1

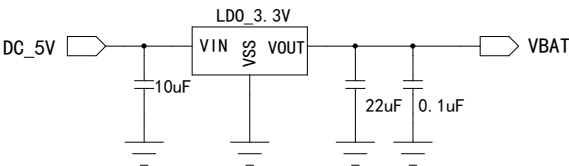
D

D

模块接口  
Module interface



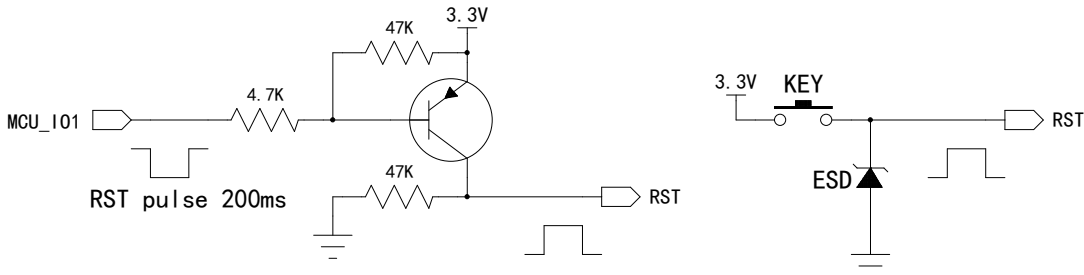
电源LD0参考电路  
Power LD0 reference circuit



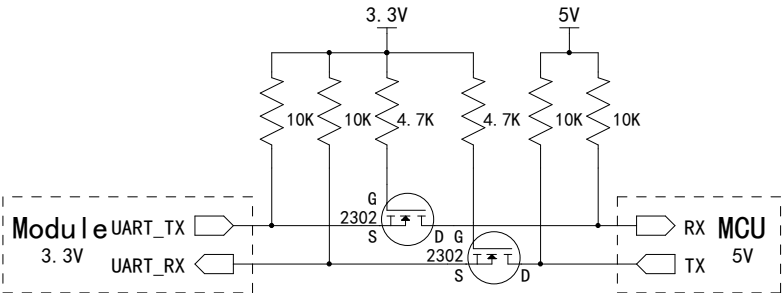
C

C

复位参考电路  
Reset reference circuit



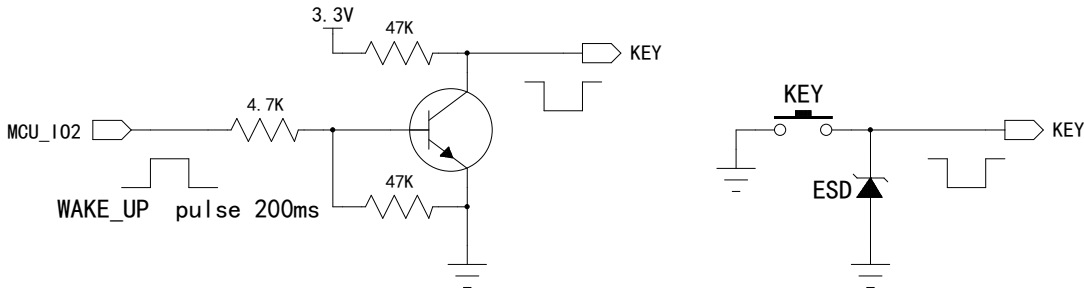
电平转换参考电路  
Level conversion reference circuit



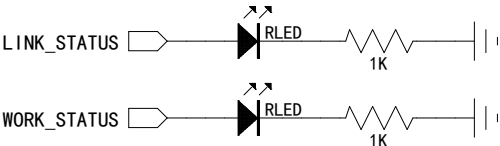
B

B

按键参考电路  
Button reference circuit



指示灯参考电路  
Indicator light reference circuit



备注:

- 1、供电范围为 2.8~3.6V，需要确保输入电压不低于 2.8V。
- 2、为了减少电压跌落，建议给VBAT预留2个(22uF、0.1uF)具有最佳ESR性能的片式多层陶瓷电容(MLCC)，且电容靠近 VBAT引脚放置。
- 3、由于本模块的芯片工作电流非常低，当断开电源时，外围MCU的IO口若有微弱的电流供给模块，此时模块容易处于异常工作的状态，所以断开模块电源后，MCU与模块连接的所有IO口都必须配置为下拉。

Remark:

1. The power supply range is 2.8~3.6V, and it is necessary to ensure that the input voltage is not lower than 2.8V.
2. In order to reduce the voltage drop, it is recommended to reserve 2 (22uF, 0.1uF) chip multilayer ceramic capacitors (MLCC) with the best ESR performance for VBAT, and the capacitors should be placed close to the VBAT pin.
3. Since the working current of the chip of this module is very low, when the power is turned off, if the IO port of the peripheral MCU has a weak current supplying the module, the module is likely to be in an abnormal working state, so after disconnecting the power of the module, the MCU and All IO ports connected to the module must be configured as pull-down.

深圳大夏龙雀科技有限公司  
SHEN ZHEN DX-SMART TECHNOLOGY CO., LTD

名称/Name: DX-BT24-T参考设计  
DX-BT24-T Reference design

绘制/Draw: CHAN 尺寸/Size: A3

审核/Check: BLANK 版本/Version: 1.0

日期/Date: 2022/6/9

A

A